


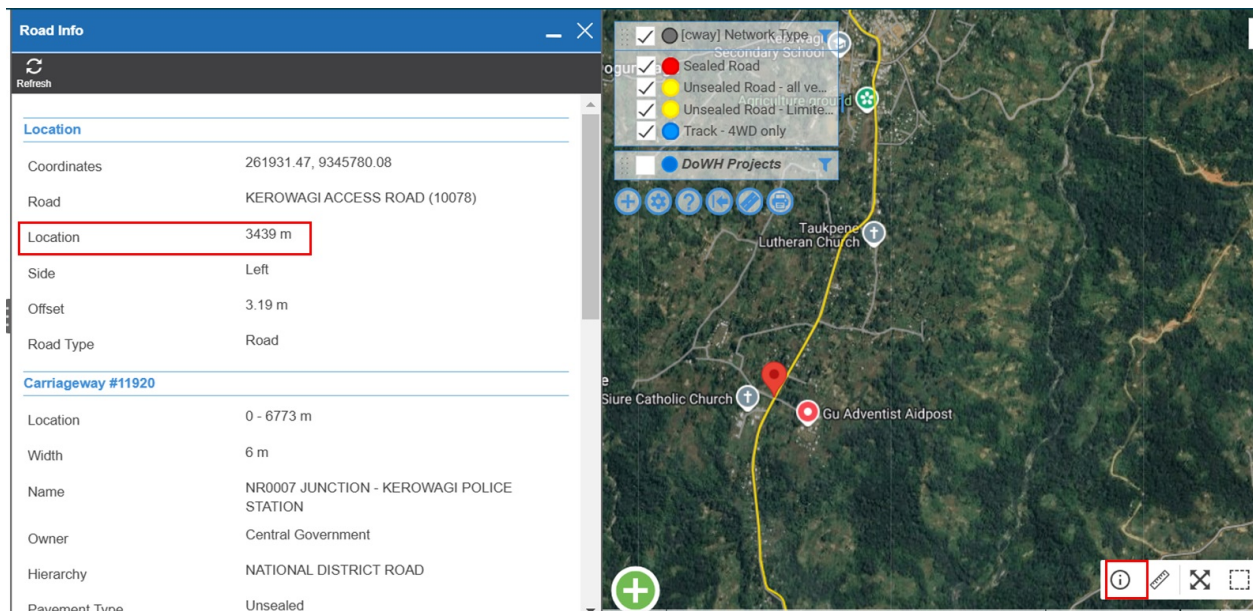


# HOW TO - Find the Start and End Locations

17/03/2026 6:31 am +10

To find the Start and End locations, do the following:

- Use the 'From' and 'To' locations found in the Project Name and Project Description fields as a reference, then you need to find these locations on the map.
- Once you've identified the location, you should make sure the Carriageway Section layer is on the map (in Standard view).
- Use the  (in the bottom right corner) to identify the chainage. When you have selected the  your cursor will change from an arrow to a cross hair  symbol. When you select a point on the carriageway in this mode, it will bring up a panel on the left, find the 'Location' which is a number that represents the chainage location. Enter this in the Start or End (Start should be the From).
- The Start chainage needs to be a lower value than the End chainage, so you may need to switch them around.



If you don't know the Start and End chainage when you are entering the data, you can just use Start = 0 and End = 1, so that you can Save the record, then go and find the correct chainage on the map and then save it again.